

FIGURE 5 - EXAMPLE FLOW METER: RMH-XXX-CL2

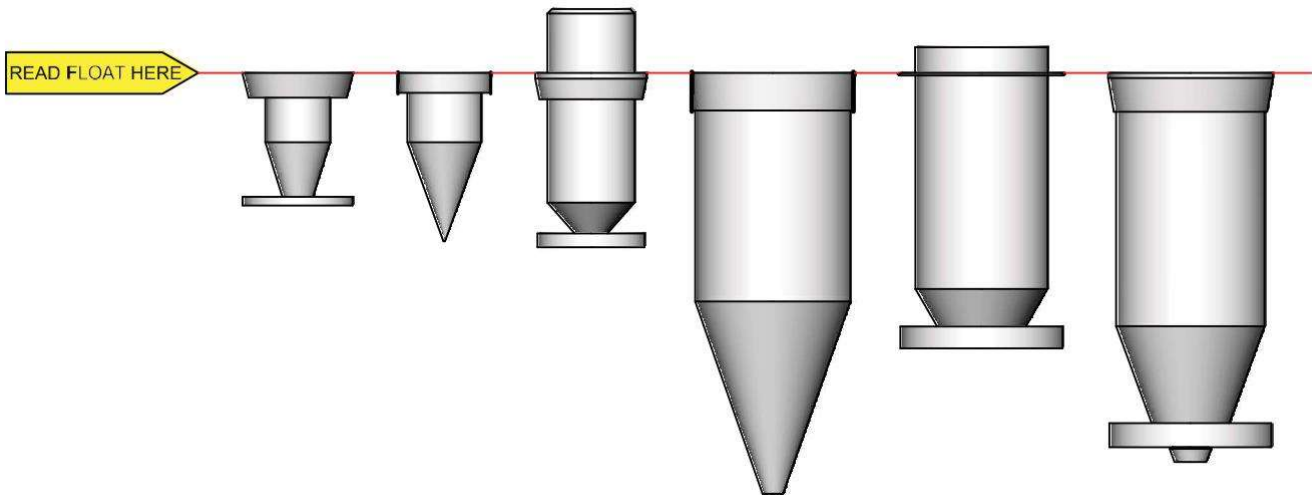
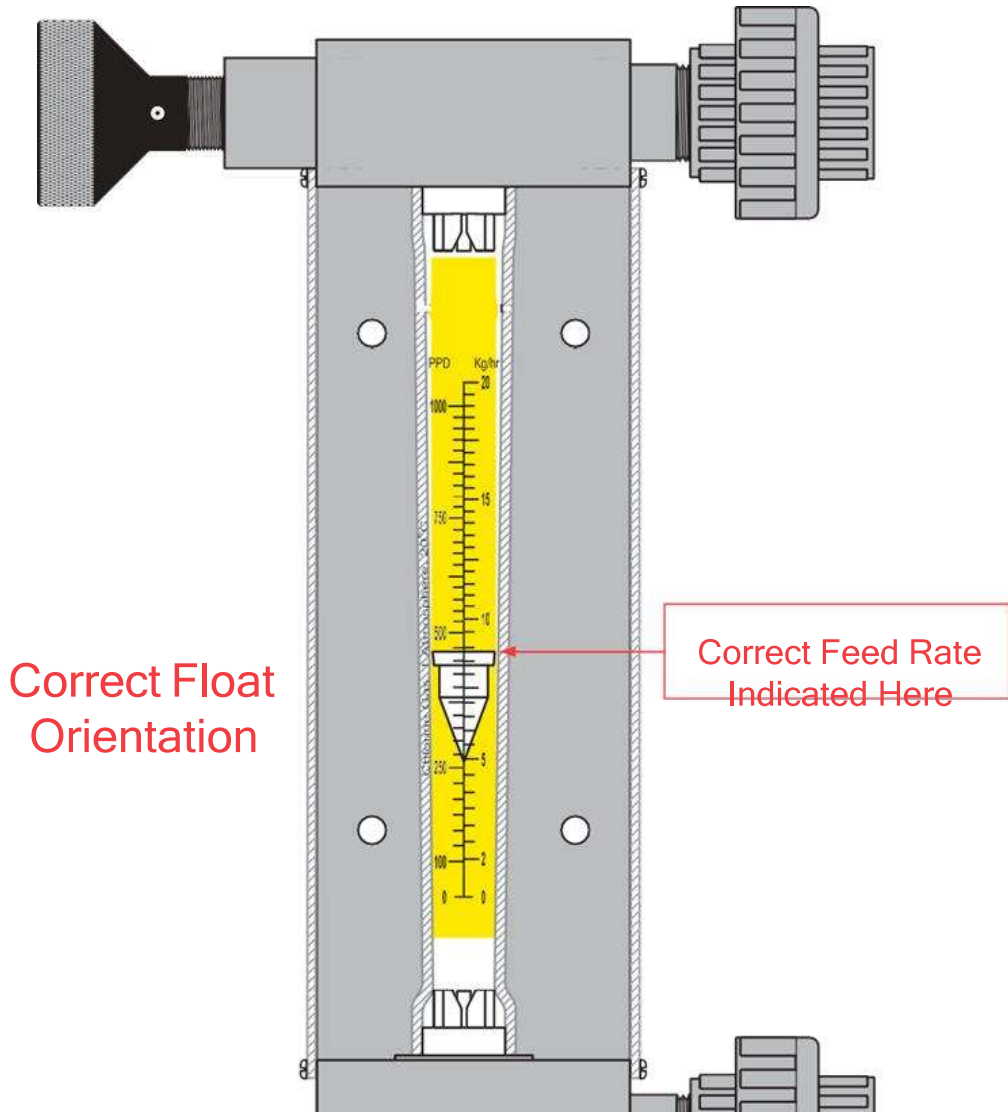
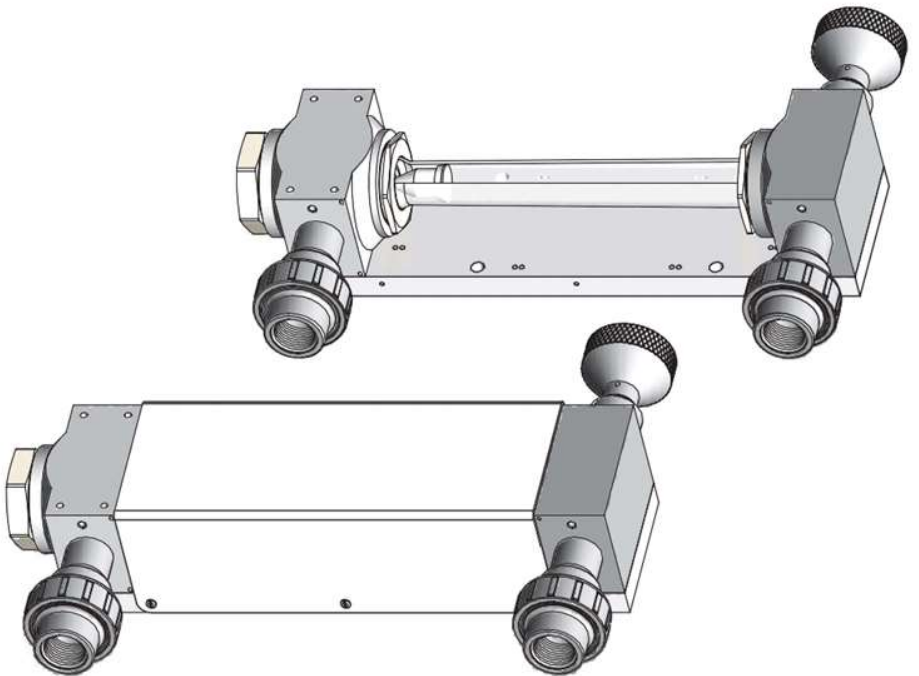
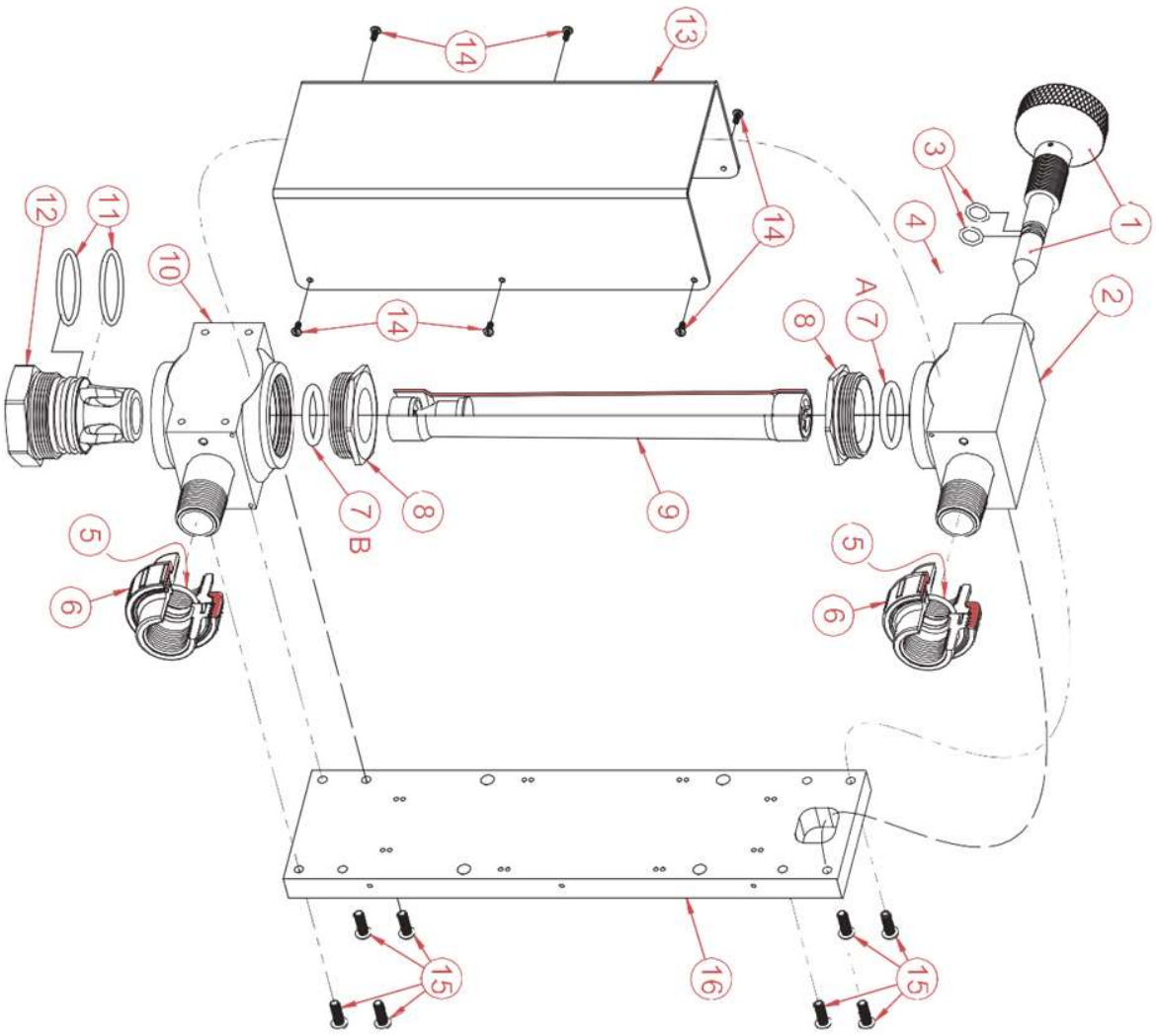


FIGURE 6 - READING EDGE FOR VARIOUS FLOAT SHAPES



ENCHLOR

V1EXPLODED
VIEW

12" REMOTE METER, Dwg. No. RMH-XXX-CL2, EXP

Item No.	Description	Quantity	PartNo.
1	Rate Valve Stem with Knob & Pin	1	RVH-411-000
2	Top Meter Block	1	MBH-UB2-300
3	^{PM} O-Ring	2	OH-VIT-112
4	1/4" NPT Plug	1	PLH-108-250
5	^{PM} O-Ring (for 1" PVC Union)	2	OH-VIT-215
6	1" PVC Union	2	U-4475
7A	^{PM} O-Ring	1	OH-VIT-324
7B	^{PM} O-Ring	1	OH-VIT-322
8	Meter Tube Hex Nut	2	MBH-THN-300
9A	Meter Tube (125 PPD / 2.5 Kg/h)	1	MT-025
9B	Meter Tube (250 PPD / 5.0 Kg/h)	1	MT-05
9C	Meter Tube (500 PPD / 10 Kg/h)	1	MT-10
9D	Meter Tube (800 PPD / 15 Kg/h)	1	MT-15
9E	Meter Tube (1,000 PPD / 20 Kg/h)	1	MT-20
9F	Meter Tube (1,500 PPD / 30 Kg/h)	1	MT-30
9G	Meter Tube (2,000 PPD / 40 Kg/h)	1	MT-40
9H	Meter Tube (3,000 PPD / 60 Kg/h)	1	MT-60
10	Bottom Meter Block	1	MBH-LB3-300
11	^{PM} O-Ring	2	OH-VIT-224
12	Meter Inlet Plug	1	MIH-300-000
13	Meter Shield	1	MSU-12T-THN
14	Meter Shield Screws	6	#6-32 x 5/16"
15	Meter Block Screws	8	BTH-STA-189
16	Meter Base	1	MBU-12T-THN



Bill of material

12" REMOTE METER, Dwg. No. RMH-XXX-CL2, EXP